



FINISHING | WEAN TO FINISH | NURSERY

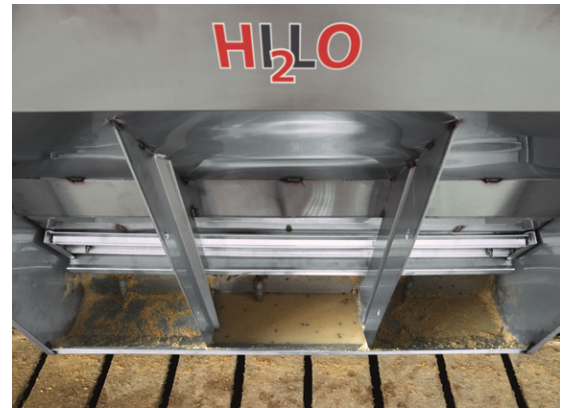
STAINLESS STEEL FEEDERS



STAINLESS STEEL FEEDERS

H₂O WET/DRY FEEDING

AP's exclusive, wet/dry feeders have individual feeding compartments giving each pig access to the feed shelf and watering nipple through trough dividers that completely seal off the feed space. Not only does this prevent one pig from flooding the entire trough but this unique design allows each pig to create their own feed-to-water mixture in an individualized trough space.



Patent Pending



EXCLUSIVE AP WET/DRY FEEDER FEATURES

- Individualized trough space and nipple allow each hog to mix their optimal feed-to-water ratio
- AquaGlobe Auto Flow Control Nipples regulate water flow, regardless of barn water pressure
- Built-in weep holes for each individual trough space to eliminate flooding potential
- "A" shaped shelf design and built in agitator help prevent feed clogging
- Every feeder includes a standard built-in hopper extension allowing extra feed capacity without paying for additional add-ons

H2L SERIES WET/DRY

The H2L series wet/dry feeders provide the greatest flexibility for all growth stages of wean-to-finish hogs. Crank adjustments allow positioning of the shelf height and feed gate to achieve precise feed flow and less waste. Heavy-duty welded construction including welded tab connections and center bracing provide ample strength and stability to withstand the rigors of everyday use.



H2L series feeders feature four crank adjustments to allow precise feed flow minimizing waste and optimizing feed consumption.



A 4" range of shelf height can be adjusted with a single crank handle without emptying the feeder.



H2L series feeders feature bolted drop tube holders to secure the feed delivery tube and help distribute feed evenly across the feed shelf.



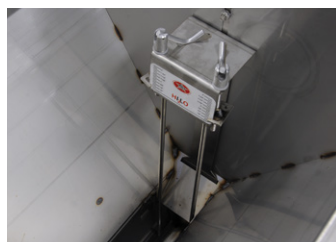
ML SERIES WET/DRY

The ML series wet/dry feeder features an adjustable feed gate and manual 3-position shelf adjustment. This feeder features many of the same construction features of the H2L series including welded tab hopper connections, inner hopper bracing for greater stability and a water line guard.



STANDARD WET/DRY

The standard series wet/dry feeder is similar construction as the ML series but with a stationary shelf. The shelf is welded at an optimal height for most wean-to-finish feed requirements.



The ML series feed gate can be easily adjusted with a simple hand crank adjustment.



The ML Series feeding shelf can be raised or lowered using a manual 3-position bolt pattern.

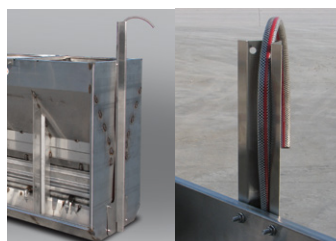


A simple hand crank adjusts the feed gate on the Standard wet/dry feeder.

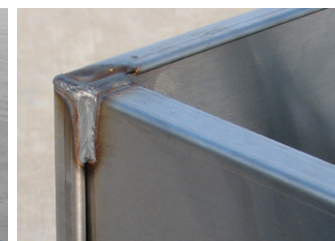


Both ML and Standard wet/dry feeders include a welded drop tube holder to secure the feed tube.

STANDARD WITH ALL WET/DRY FEEDERS



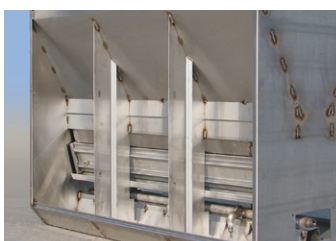
WATER LINE GUARD



STRONG WELDED CORNERS



WELDED CENTER BRACING



DURABLE DIVIDER PANELS



STEEL WATER LINE CONNECTION



TAB WELDED HOPPER CONSTRUCTION



AQUAGLOBE AUTO FLOW NIPPLES



HEMMED SEAMS FOR ADDITIONAL SAFETY

STAINLESS STEEL FEEDERS

More Feeders, More Options

From nursery to finish, AP offers many feeders and options to support the ever-growing needs of modern pork production facilities.

FINISHING & WEAN-TO-FINISH FEEDERS

AP finishing and wean-to-finish feeders are available with features and options designed to meet the specifications and expectations of modern pork production systems. Manufactured using corrosion resistant 304 stainless steel and welded construction, these feeders are engineered for durability, ease of cleaning, simple management and superior feed conversion performance.



FINISHING



WEAN-TO-FINISH



NURSERY FEEDERS

AP Nursery Feeders are ideal for introducing weaned pigs to dry feed. These feeders feature welded construction, corrosion resistant 304 stainless steel, hemmed edges and AP's patented Quick Adjust feeder adjustment system for quick, easy and precise control of feed gate adjustment.



NURSERY



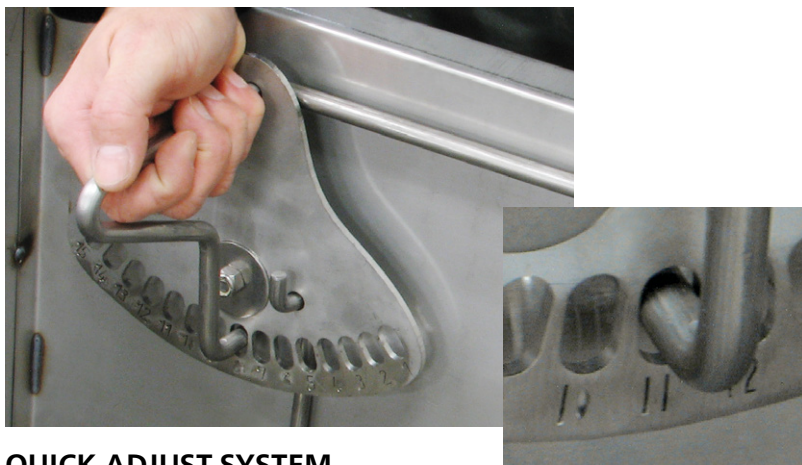
PIG STOP DIVIDERS

Standard on all AP nursery feeders to prevent pigs from becoming lodged in the feeder



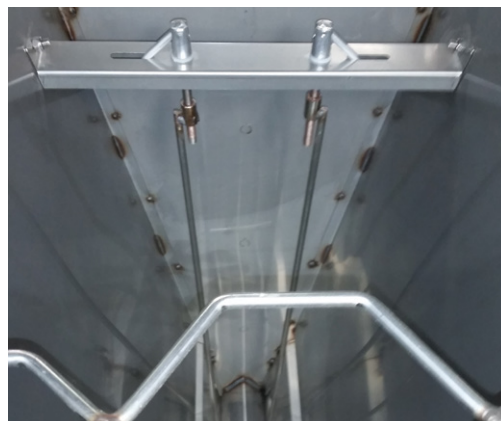
OPTIONAL DROP TUBE HOLDER

Can be added to secure the fill system tube



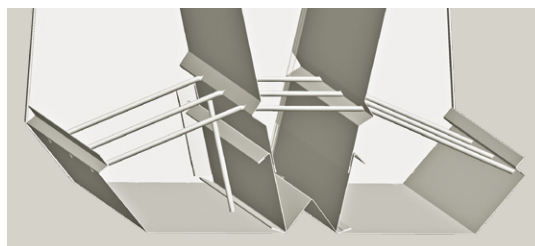
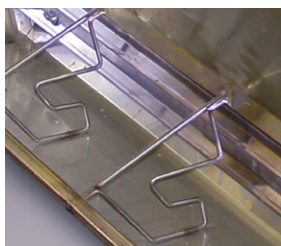
QUICK-ADJUST SYSTEM

AP's patented* Quick-Adjust indexed feeder adjustment system requires only two adjusters per feeder, providing quick, accurate and consistent control of feed gate settings. Quick-Adjust feeders can be easily adjusted from the aisle of your finisher or nursery in half the time of competitor feeders. The indexed settings are permanently laser etched in the feeder and provide for precision feed gate adjustments of 0.075" (0.2 cm) with all types of feed.



CRANK ADJUST SYSTEM

The crank adjustment allows for quick and hassle-free feed gate positioning at all phases of growth. Threaded adjustment provides increments of change as fine as 1/32" per revolution. For single-sided feeders, there are two adjusters per feed gate or four adjusters for double-sided feeders.



TROUGH DIVIDER OPTIONS

Select from three options of trough dividers designed for finish or wean-to-finish applications. Wide spaced divider rods provide comfortable access for larger hogs. The "W" design prevents small pigs from becoming lodged in the feeder. The solid panel design reduces aggression for uninterrupted feeding

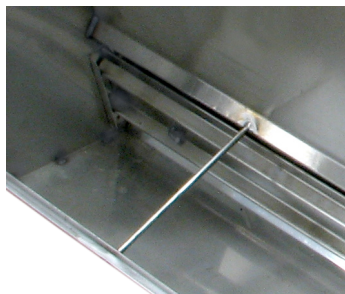
THRU-ROD DESIGN

AP feeders with rod style dividers feature AP's thru-rod design. This design utilizes stainless steel divider rods that pass through the feeder for unparalleled strength and rigidity.



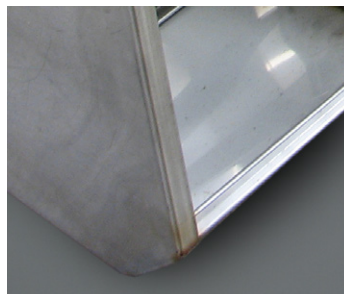
FEED SAVER LIP

AP's feed trough lip reduces feed waste and is designed for added strength and easy cleaning.



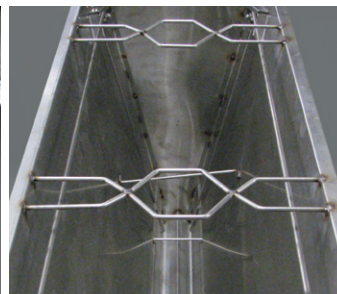
DURABLE MATERIAL

AP feeders feature corrosion resistant 304 stainless steel and welded construction for lasting durability.



HEMMED EDGES

All exposed edges on the feeders are hemmed for additional safety and strength.



DROP TUBE HOLDER

Finishing & Wean-to-Finish feeders feature convenient, welded in drop tube holders to secure the feed delivery tube and provide additional feeder strength.

*Patents US8800491, US8925486, CA2853463, CN104010491, EP2770817

Finishing Feeders

40 TO 300 LB. PIGS

PART NUMBER	STYLE	LENGTH	HEIGHT	WIDTH	TROUGH SPACES	TROUGH SPACE WIDTH	TROUGH HEIGHT	TUBE BRACKET	APPROX. CAP. **
AP-DF*403-R	Double Sided Finish Feeder	40.125"	36.25"	25.25"	Three	13.33"	4.5"	one	370 lbs.
AP-DF*504-R		50.125"	36.25"	25.25"	Four	12.50"	4.5"	one	460 lbs.
AP-DF*605-R		60.125"	36.25"	25.25"	Five	12.00"	4.5"	two	550 lbs.
AP-DF*706-R		70.125"	36.25"	25.25"	Six	11.67"	4.5"	two	645 lbs.
AP-SF*403-R	Single Sided Finish Feeder	40.125"	36.25"	14.5	Three	13.33"	4.5"	one	240 lbs.
AP-SF*504-R		50.125"	36.25"	14.5	Four	12.50"	4.5"	one	300 lbs.
AP-SF*605-R		60.125"	36.25"	14.5	Five	12.00"	4.5"	two	360 lbs.
AP-SF*706-R		70.125"	36.25"	14.5	Six	11.67"	4.5"	two	420 lbs.

Sizing recommendation - 1 pig per 2" of total trough length (recommendation can vary with size of pigs).

Wean to Finish Feeders

15 TO 300 LB. PIGS

PART NUMBER	STYLE	LENGTH	HEIGHT	WIDTH	TROUGH SPACES	TROUGH SPACE WIDTH	TROUGH HEIGHT	TUBE BRACKET	APPROX. CAP. **
AP-DF*403-W	Double Sided W-F Feeder	40.125"	36.25"	25.25"	Three	13.33"	4.5"	one	370 lbs.
AP-DF*504-W		50.125"	36.25"	25.25"	Four	12.50"	4.5"	one	460 lbs.
AP-DF*605-W		60.125"	36.25"	25.25"	Five	12.00"	4.5"	two	550 lbs.
AP-DF*706-W		70.125"	36.25"	25.25"	Six	11.67"	4.5"	two	645 lbs.
AP-SF*403-W	Single Sided W-F Feeder	40.125"	36.25"	14.5	Three	13.33"	4.5"	one	240 lbs.
AP-SF*504-W		50.125"	36.25"	14.5	Four	12.50"	4.5"	one	300 lbs.
AP-SF*605-W		60.125"	36.25"	14.5	Five	12.00"	4.5"	two	360 lbs.
AP-SF*706-W		70.125"	36.25"	14.5	Six	11.67"	4.5"	two	420 lbs.

Sizing recommendation - 1 pig per 2" of total trough length (recommendation can vary with size of pigs).

Wean to Finish (Solid Dividers)

15 TO 300 LB. PIGS

PART NUMBER	STYLE	LENGTH	HEIGHT	WIDTH	TROUGH SPACES	TROUGH SPACE WIDTH	TROUGH HEIGHT	TUBE BRACKET	APPROX. CAP. **
AP-DF*423-P	Double Sided W-F Feeder	42.125"	36.25"	25.25"	Three	14.0"	4.5"	one	385 lbs.
AP-DF*564-P		56.125"	36.25"	25.25"	Four	14.0"	4.5"	one	515 lbs.
AP-DF*705-P		70.125"	36.25"	25.25"	Five	14.0"	4.5"	two	645 lbs.
AP-SF*423-P	Single Sided W-F Feeder	42.125"	36.25"	14.5	Three	14.0"	4.5"	one	250 lbs.
AP-SF*564-P		56.125"	36.25"	14.5	Four	14.0"	4.5"	one	335 lbs.
AP-SF*705-P		70.125"	36.25"	14.5	Five	14.0"	4.5"	two	420 lbs.

Sizing recommendation - 1 pig per 2" of total trough length (recommendation can vary with size of pigs).

Swap the asterisk () in the part number with either (C) for Crank Adjust or (P) for Pivoting Quick-Adjust

**Approximate capacity based on a level full feeder, feed density of 42 lbs. per cubic foot.

Specifications are subject to change without notice.

Wean to Finish

HI2LO FEEDERS

FEEDER TYPE	PART NUMBER	STYLE	LENGTH	HEIGHT	WIDTH	TROUGH SPACES	TROUGH SPACE WIDTH	TROUGH HEIGHT	APPROX. CAP.**
H2L Series	AP-WDF302-H2L	Double Sided Wean-to-Finish Feeder	29.6"	39.5"	22.25"	2	14.8"	4"	283 lbs
	AP-WDF483-H2L		47.6"	39.5"	22.25"	3	15.9"	4"	454 lbs
	AP-WDF604-H2L		59.6"	39.5"	22.25"	4	14.9"	4"	570 lbs
ML Series	AP-WDF302-ML		29.6"	39.5"	22.25"	2	14.8"	4"	283 lbs
	AP-WDF483-ML		47.6"	39.5"	22.25"	3	15.9"	4"	454 lbs
	AP-WDF604-ML		59.6"	39.5"	22.25"	4	14.9"	4"	570 lbs
Standard Welded Shelf*	AP-WDF302		29.6"	39.5"	22.25"	2	14.8"	4"	283 lbs
	AP-WDF483		47.6"	39.5"	22.25"	3	15.9"	4"	454 lbs
	AP-WDF604		59.6"	39.5"	22.25"	4	14.9"	4"	570 lbs

* Coming in 2017. Check with your AP representative concerning standard welded shelf feeder availability.

PATENT PENDING

Nursery Feeders

10 TO 80 LB. PIGS

PART NUMBER	STYLE	LENGTH	HEIGHT	WIDTH	TROUGH SPACES	TROUGH SPACE WIDTH	TROUGH HEIGHT	APPROX. CAP.**
AP-DN*244	Double Sided Nursery Feeder	24.06"	25.25"	17.2"	Four	6.0"	3.32"	107 lbs.
AP-DN*305		30.06"	25.25"	17.2"	Five	6.0"	3.32"	133 lbs.
AP-DN*366		36.06"	25.25"	17.2"	Six	6.0"	3.32"	160 lbs.
AP-DN*427		42.06"	25.25"	17.2"	Seven	6.0"	3.32"	187 lbs.
AP-DN*488		48.06"	25.25"	17.2"	Eight	6.0"	3.32"	214 lbs.
AP-SN*244	Single Sided Nursery Feeder	24.06"	25.25"	11.5"	Four	6.0"	3.32"	86 lbs.
AP-SN*305		30.06"	25.25"	11.5"	Five	6.0"	3.32"	107 lbs.
AP-SN*366		36.06"	25.25"	11.5"	Six	6.0"	3.32"	128 lbs.
AP-SN*427		42.06"	25.25"	11.5"	Seven	6.0"	3.32"	150 lbs.
AP-SN*488		48.06"	25.25"	11.5"	Eight	6.0"	3.32"	172 lbs.

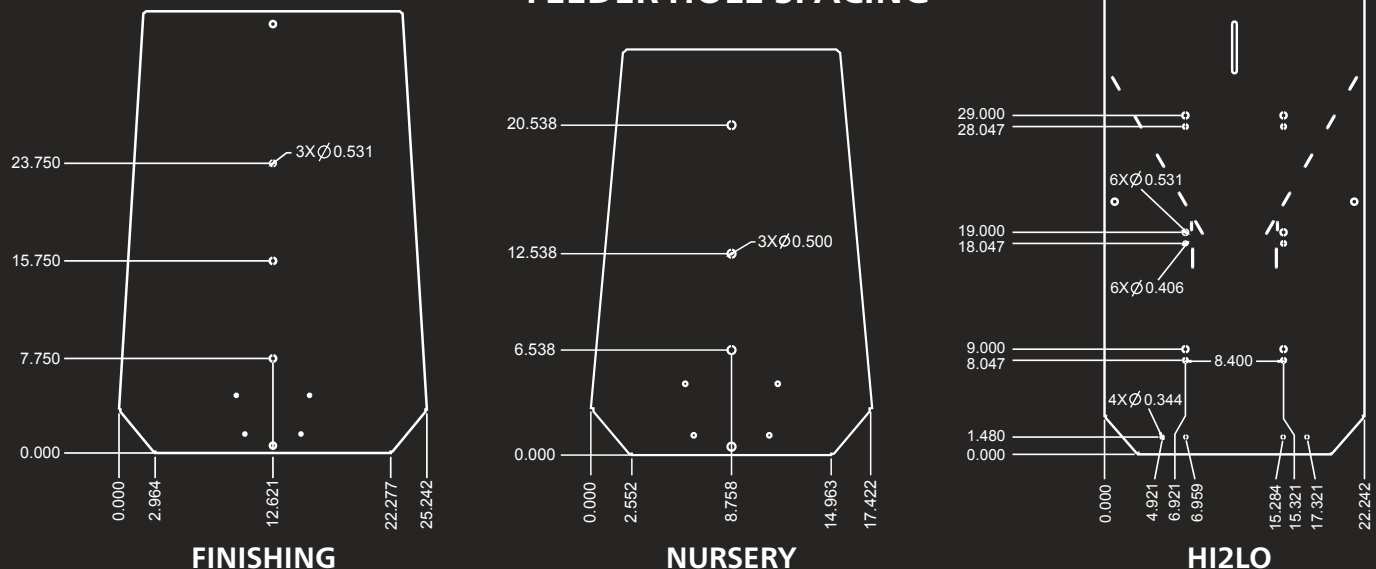
Sizing recommendation - 5 pigs per feed space, recommendation can vary with size of pigs.

Swap the asterisk () in the part number with either (C) for Crank Adjust or (P) for Pivoting Quick-Adjust

**Approximate capacity based on a level full feeder, feed density of 42 lbs. per cubic foot.

Specifications are subject to change without notice.

FEEDER HOLE SPACING



DURABLE FEEDING EQUIPMENT

AP finish, wean to finish, and nursery feeders are available with features and options designed to meet the specifications and expectations of today's modern pork production systems.



You've Got Options

Looking for other feeding options? Ask about our complete line of drop feeders including Econo-Drop, Ultra-Drop, Accu-Drop, INTaK, or Farrowing feeders. Or, if true individual animal nutrition is what you need, the AP Electronic Sow Feeder is a perfect solution.



AUTOMATED PRODUCTION SYSTEMS
1004 E. Illinois St. Assumption, IL 62510 USA
Tel: 217-226-4449 Fax: 217-226-3540
Int'l Tel: 217-226-4401
Tech Support: 712-239-1011



For more information on AP's many products and services, contact your local AP representative or visit us online at:
www.automatedproduction.com