



Fan model

PRODUCT NAME	BLADE #	MOTOR				NOISE DB	AIR FLOW VOLUME		DIMENSION mm	WEIGHT kg
		VOLTAGE V	CURRENT A	POWER HP	SPEED rpm		CFM ft3/m	CMH m3/H		
NEWLINE - 36" Hanging Fan	6	380	1.25	0.5	1400	≤ 60	12183	20700	1000 x 1000 x 350	40
NEWLINE - 36" Box Fan	6	380	1.25	0.5	1400	≤ 64	11019	18720	1000 x 1000 x 450	54
NEWLINE - 36" Box Fan	6	220	2.7	0.5	1385	≤ 64	10596	18000	1000 x 1000 x 450	54
NEWLINE - 36" Cone Fan	6	380	1.25	0.5	1400	≤ 64	14387	24444	1000 x 1000 x 1080	64
NEWLINE - 50" Box Fan	6	380	2.8	1.5	1420	≤ 64	23043	39150	1380 x 1380 x 450	89
NEWLINE - 50" Cone Fan	6	380	2.8	1.5	1440	≤ 64	26237	44577	1380 x 1380 x 1180	116

SuperDyma

Exceptional Resistance to Rust

- Not only rust resistant on flat surfaces
- But also highly rust resistant on cut end surfaces
- In addition, extremely high alkaline resistance

The corrosion resistance of Super Dyma is enhanced by the composite effect of adding aluminum, magnesium and silicon to the conventional zinc coating. Silicon, among other elements, is highly effective in inhibiting corrosion when combined with Mg.



Results of Neutral Salt Spray Test (JIS Z2371)

(JIS Z2371: This Japanese Industrial Standard has been prepared based on the first edition of ISO9227 corrosion test in artificial atmospheres. (Neutral Salt Spray Test)

Specimen	Type of coating	Coating mass
SuperDyma	Zn-11%Al-3%Mg-0.2%Si	K 18
Hot-dip Zn-coated sheet	Zn	Z25

TEST TIME	120 hours	240 hours	500 hours	1000 hours
SuperDyma Coating mass symbol : K18 Surface treatment: No Treatment				
Hot-dip Zn-coated sheet Coating mass symbol : Z25 Surface treatment: No Treatment				

*SUPERDYMA is a registered trade name of Nippon Steel & Sumitomo Metal Corporation www.nssmc.com/en/index.html/



©2012 NIPPON STEEL & SUMITOMO METAL CORPORATION All Rights Reserved

High Efficiency Motor



The Siemens company 1LE0001 series of **high efficiency** 3 phase asynchronous motors with cast iron housing is Totally Enclosed Fan Cooled (TEFC) with IP55 environmental protection and applicable for general purpose use. These motors are designed and manufactured in accordance with ISO/IEC standards, GB standards. By switching to 1LE0001 series motor **customer can save energy up to 10% !!**

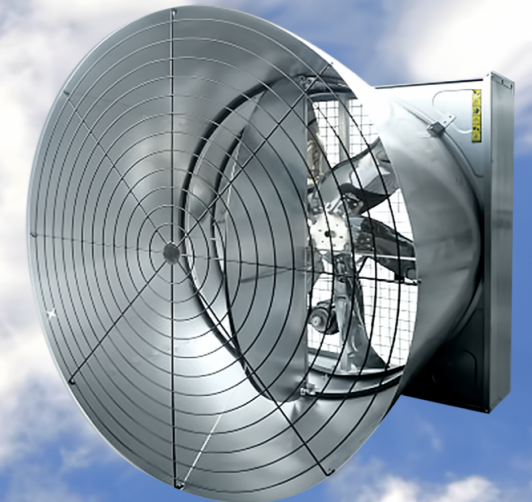
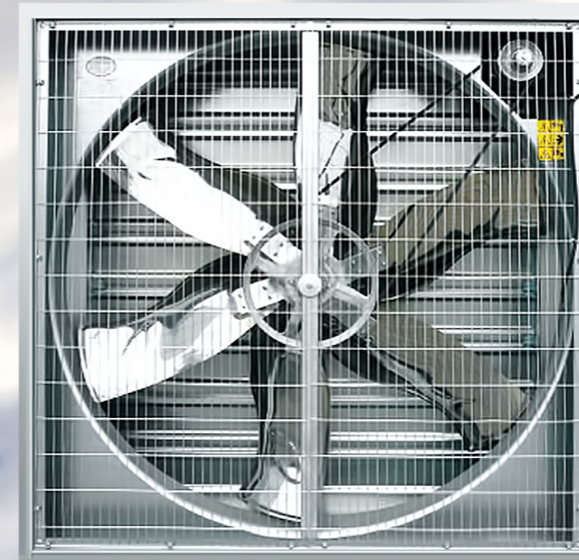
SIEMENS		SIEMENS LTD., CHINA		CE	
Made in P.R.China		中国制造			
1	3-Mot. 1LE0001-3BA2-3-3AA4-Z	355M	IMB3	IP55	LMH- 1008 / 800003888993 / 001
6	V	Hz	kW	A	EFF.
7	380 Δ	50	220	390	95.8%
8	660 Y	50	220	225	95.8%
14	BRG DE 6319 C3		BRG NDE 6319 C3		GB18612-2012 Eff. Grade3
15	GREASE:		IEC60034-30 IE2		
16	Re-grease interval :2000h		Quantity: 40g		SF1.15
	Q1321081 KJA001-2012				Net: 1600 kg

1: Three-phase low voltage motor 2: order No 3: Series number 4: Type of construction 5: Degree of protection 6: Rated voltage and Winding connections 7: Frequency (Hz) 8: Rated output (Kw) 9: Rated current (A) 10: Efficiency 11: Power factor (cos) 12: Rated speed 13: Thermal class 14: Bearing at the drive end 15: Grease type 16: Re-grease interval 17: Standards 18: Quantity 19: Bearing at the non-drive end 20: GB Standard 21: Net weight 22: Efficiency grade 23: Frame size 24: Balance method 25: Service factor



VENTILATION FAN

EXHAUST & BLOWER FAN FOR INDUSTRIAL APPLICATION



GUARANTEE HIGH PERFORMANCE & QUALITY



Imported & Distributed by :

PT. SINAR MUSTIKA RAYA

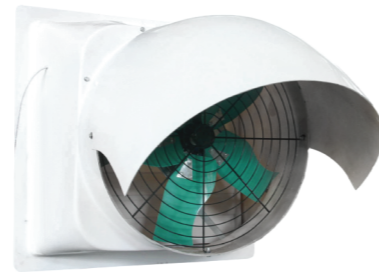
www.sinarmustikaraya.com

Jl. Daan Mogot KM.21, Pergudangan Arcadia Blok G15/12, Batu Ceper, Tangerang 15122 - INDONESIA

Tel. : +6221 2900 6273 / +6221 2900 6283 / +6221 2900 6292 · Fax.: +6221 2900 6279

Email : ptsinarmustikaraya@gmail.com

Fan model



36" Box Fan / Centrifugal Fan

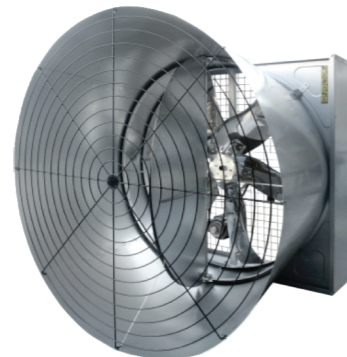
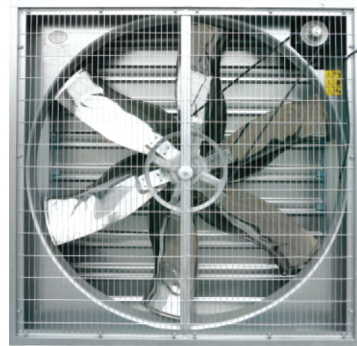
Centrifugal system can open the shutter automatically with power on. Smooth operation, low noise and consistent air flow. When power is off, shutters close under the action of gravity and spring. Shutter pieces close tightly with good sealing effect.

36" Hanging Fan

Hanging fan can be hanged directly in the bird house, no need to install in the wall. It is mainly used in the cattle or other open and semi-open house. This kind of fan has larger air flow and is easy to install.

Variable Speed Fan

Adjust air speed and air flow according to the temperature in the house, power saving optimization design.



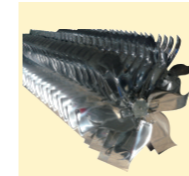
50" Box Fan / Centrifugal Fan

50" Butterfly cone fan

50" Cone fan



Spare parts



Blades

- Material: 430BA stainless steel.
- Offered by Krupp Stainless Co., Ltd.
- Thickness: 1.2mm.



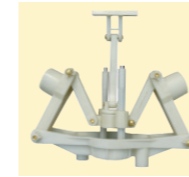
Shutter

- Material: Hot galvanized sheet
- Shutter thickness: 0.8mm. The middle piece is 1.5mm



Frame

- Material: Hot galvanized sheet
- Thickness: Top and bottom frame is 1mm. Left and right frame is 0.8mm
- Zinc coating: 180g/m²



Centrifugal system

- Column: 304 stainless steel. Strong and anti-rust
- Compared with the traditional hammer opening system, our centrifugal system can keep the fan shutters open with 90 degree forever.



Motor

- Siemens motor. Chinese motor
- Protection level: IP 54 or 55
- Insulation level: F



Motor base plate

- Siemens motor. Chinese motor
- Protection level: IP 54 or 55
- Insulation level: F



Big belt pulley & flange

- Light weight, low vibration bearing
- Bearing produced by C&U Group.
- Standard: automobile hub bearing. JB/T 10238-2001



Linkage pole

- Material: Aluminum alloy. No deformation in hot weather
- Spring: 304 stainless steel



Belt

- Mitsubishi belt from Japan, maintenance free

Air volume curve table

